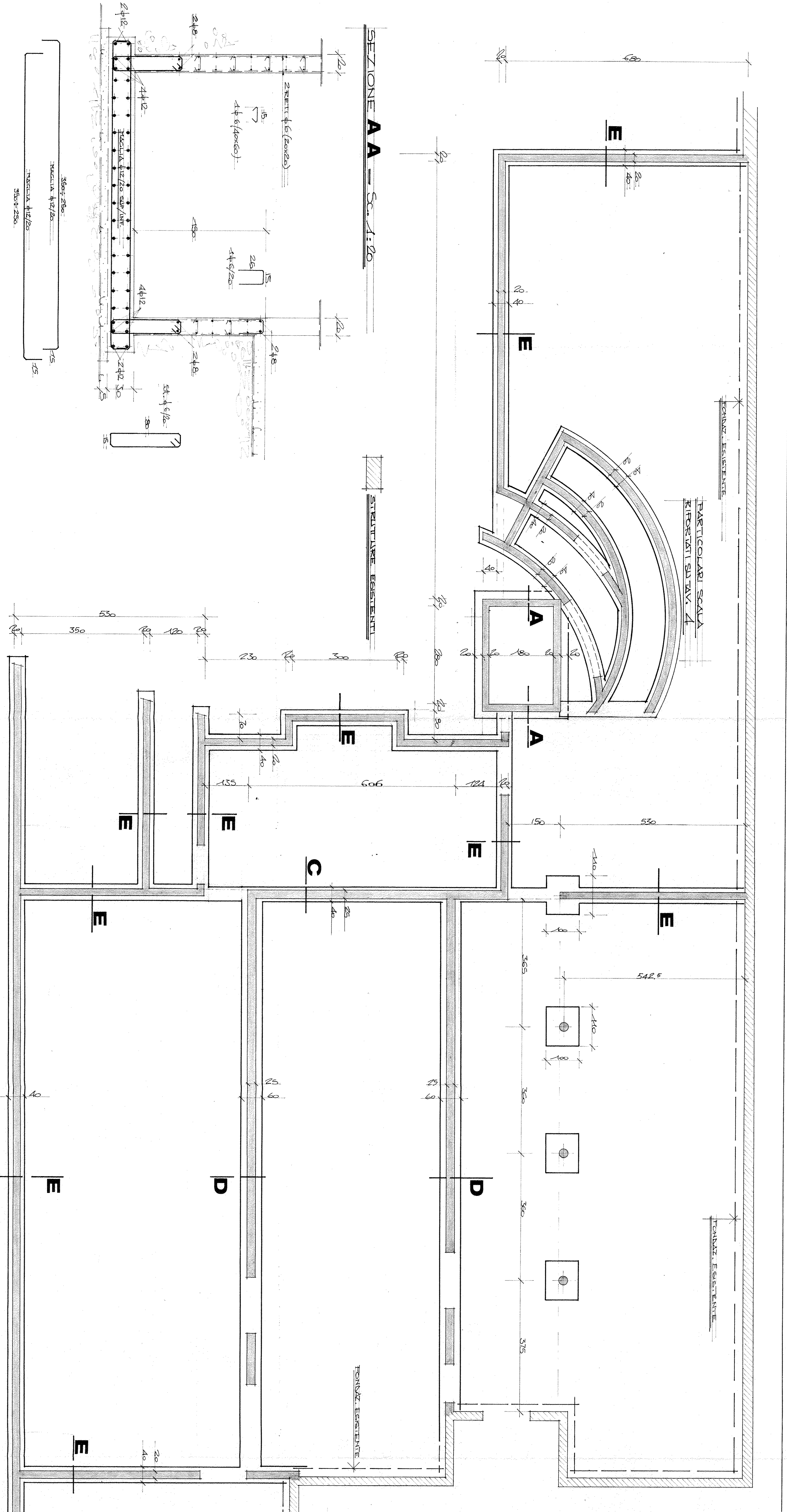
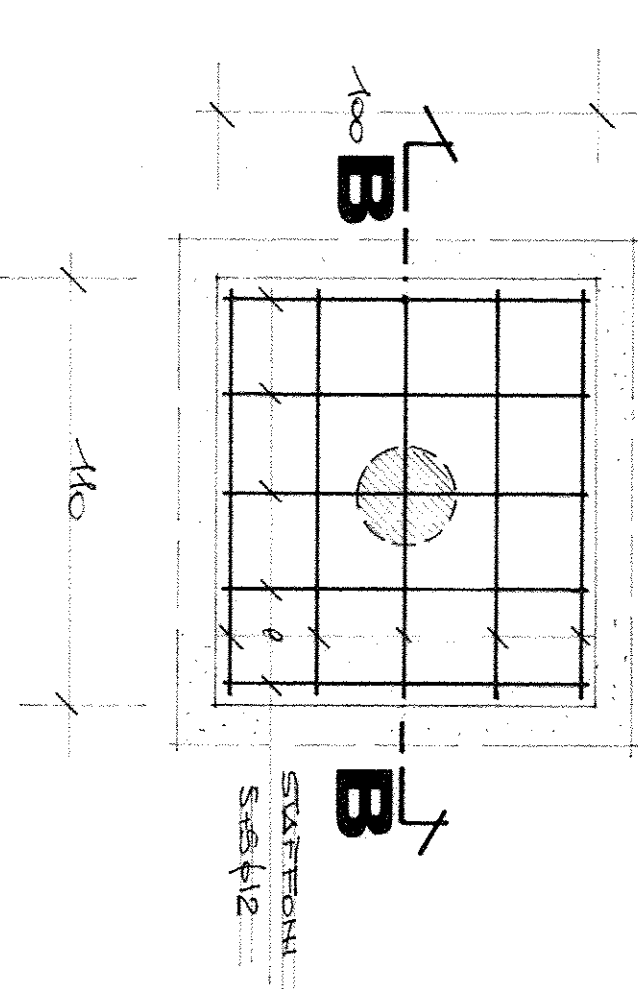


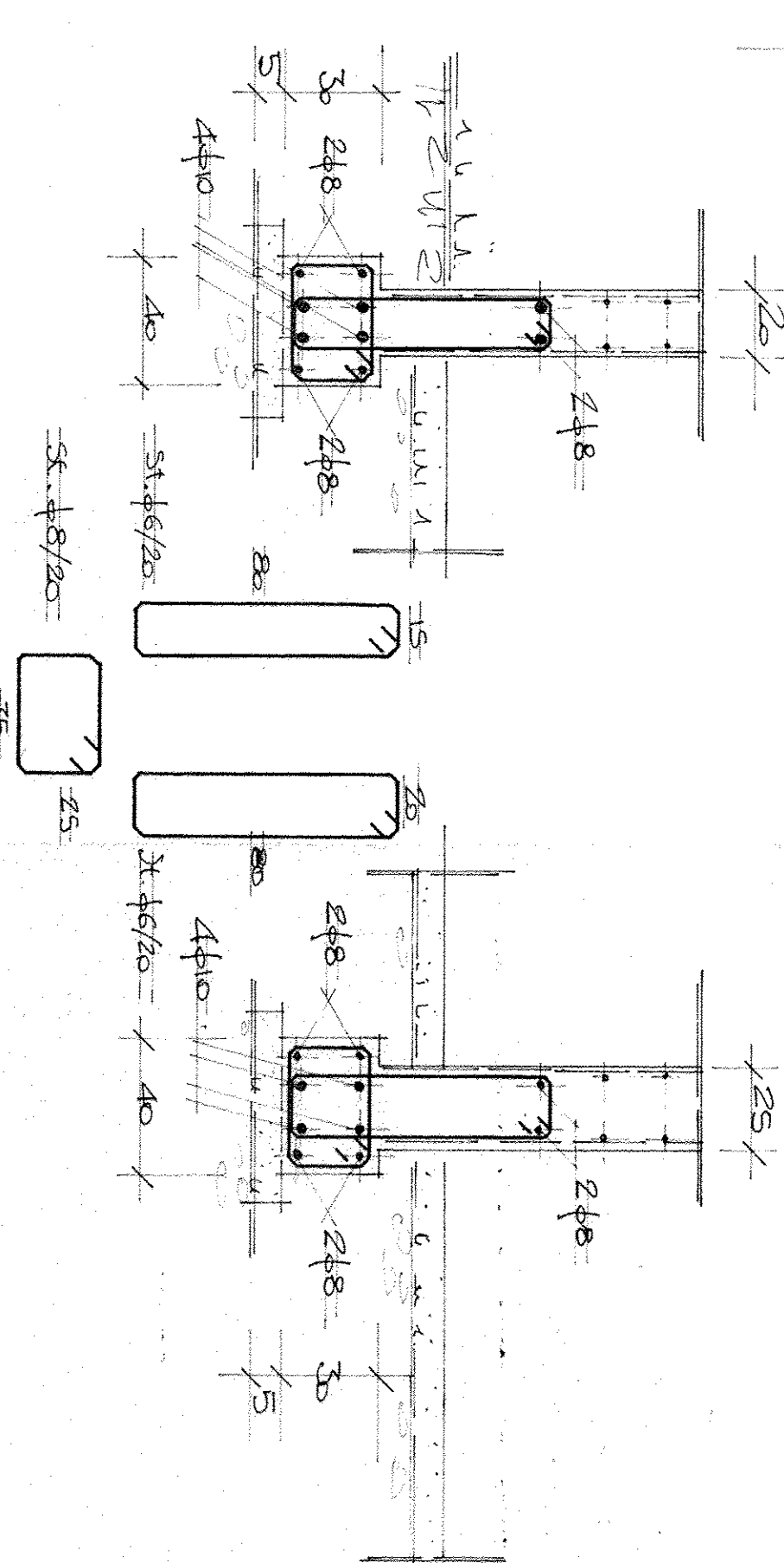
PIANTA FONDAZIONI — 1:50



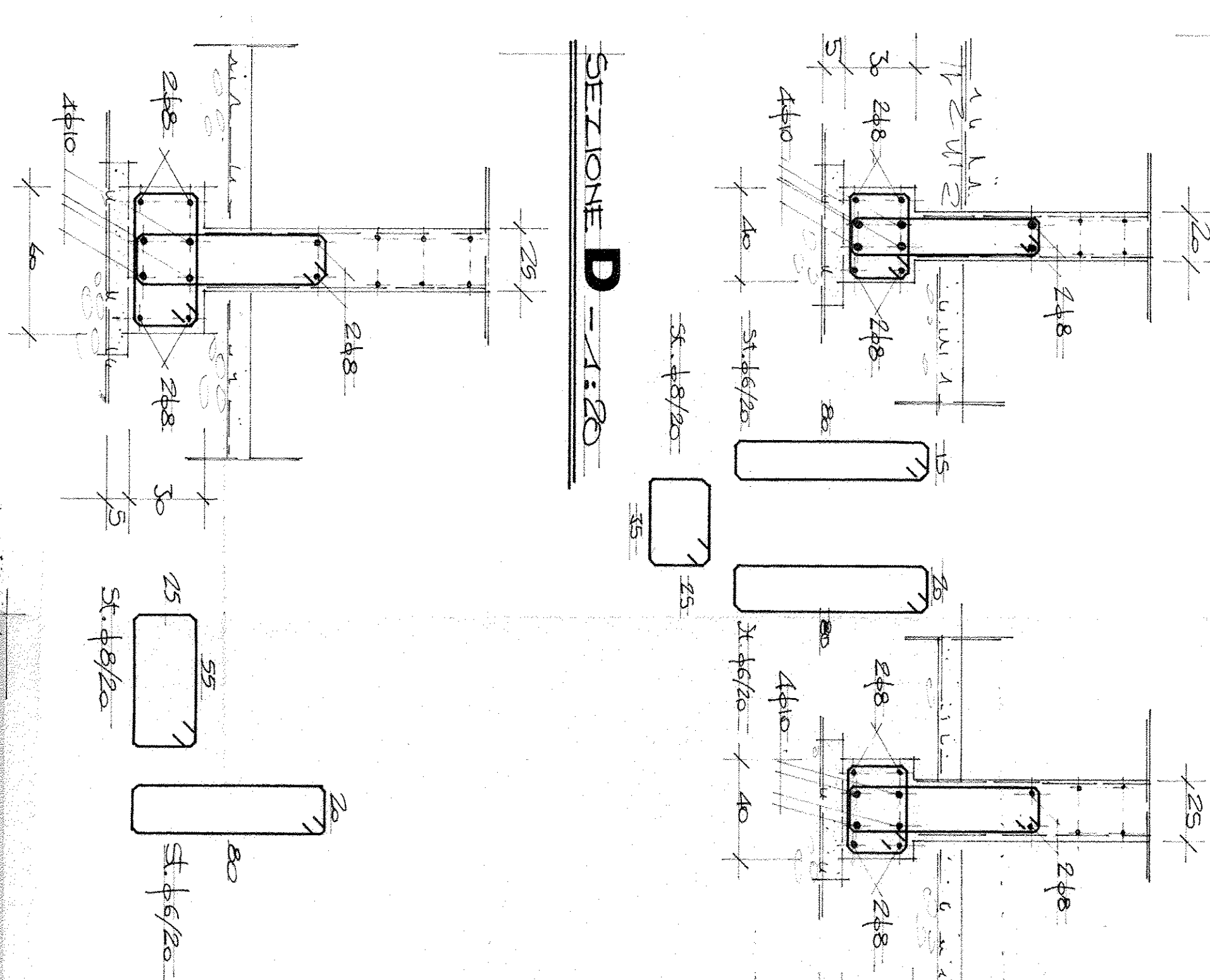
SCHEMA PLINTI - 1:20



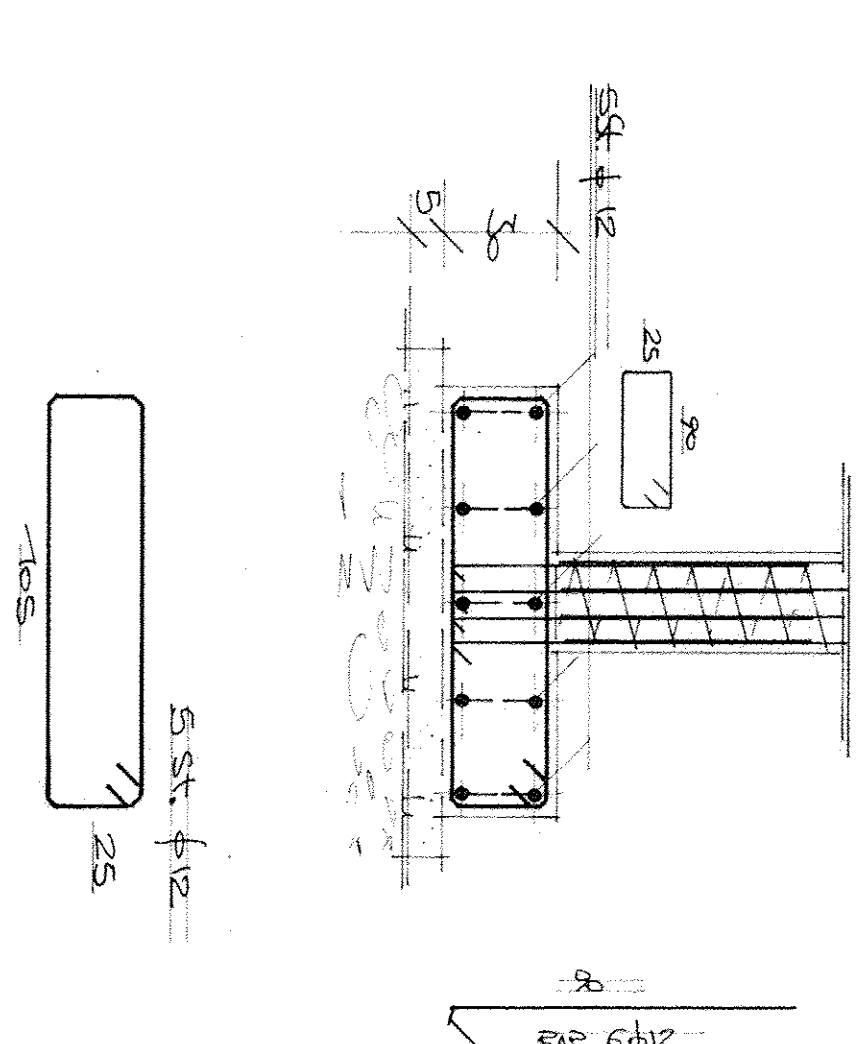
SEZIONE E -1:20



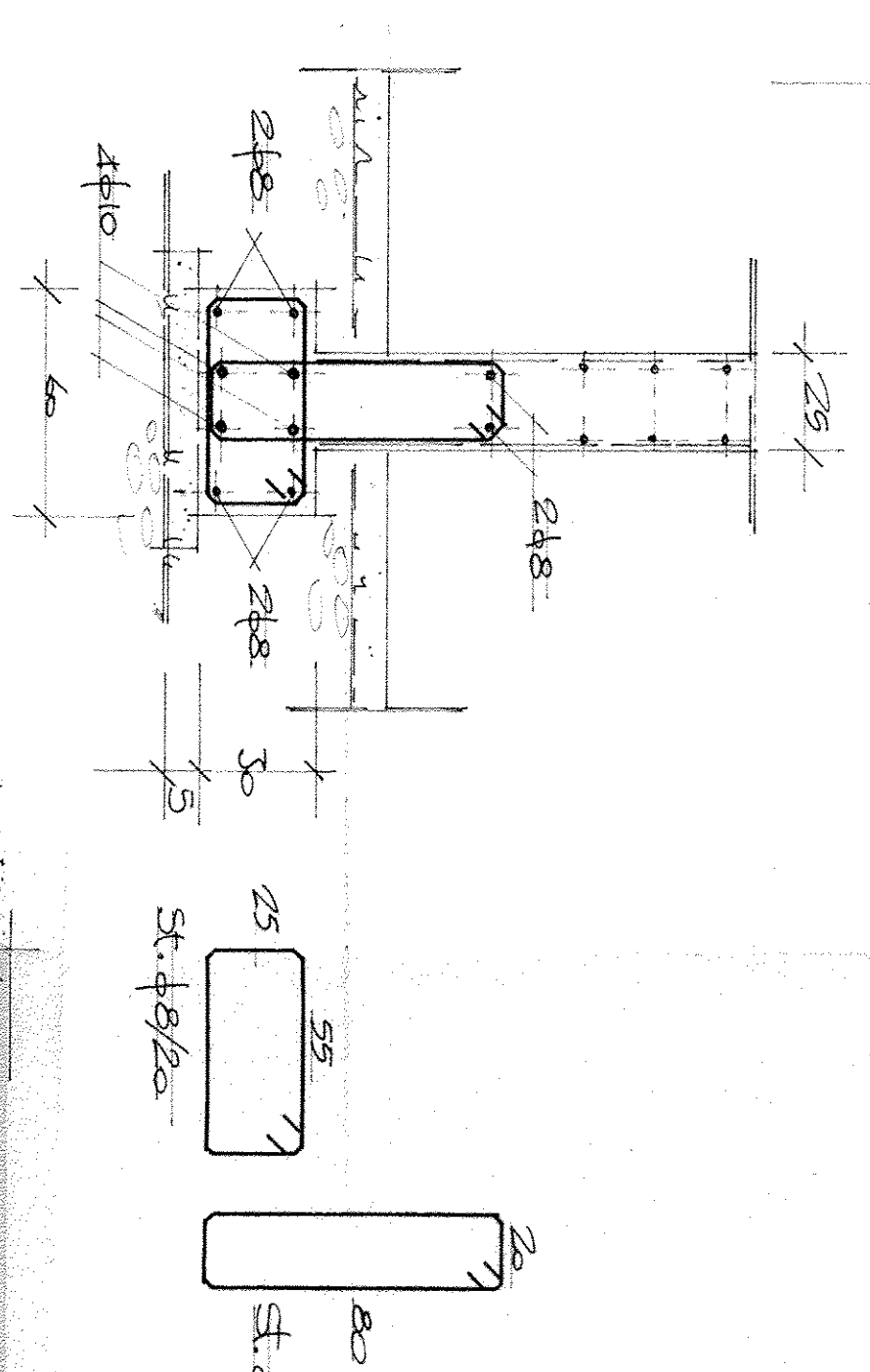
SEZIONE C - A:20



B - 1.20
SEZIONE



SEZIONE **D** - 1:20



PRESCRIZIONI

calcestruzzo per fondazioni: R_{bk} 250 kg/cm²
calcestruzzo per strutture in elevazione: R_{bk} 300 kg/cm²
acciaio: FeB 44k

1390

U.S. L. N. 1 - TRIESTINA
26 FEB 1968
Prot. N. _____

IL DIRETTORE DEI LAVORI
A. Rossi

DEPOSITATO	CONCERNATO
001390	-1500.00



USL N.1 - TRIEST

OSPEDALE DI CATTINARA
-INSTALLAZIONE DI UN TOMOGRAFO A RISONANZA MAGNETICA

PIANTA FONDAZIONI
PARTICOLARI ARMATI

D/S.	PROG.
------	-------

[illegible]

 LOCCHIATTI <small>SPINELLI</small>	ufficio	progetti	DATA 28.02.88 SCALE 1:500 K/25 	1	MOD. LAN AOC
-------------------------------------------------------------------------------------------------------------------------------------	----------------	-----------------	------------------------------------------------------------------------------------------------------------------------------	---	-----------------